



2408/98 Joynton Avenue Zetland NSW

2 2 1

This executive two bedroom residence boasts generous open plan interiors spanning over two levels that are flooded with natural light.

This modern parkside residence is desirably set back from the main road, whilst being in the centre of Sydney's newest foodie hotspot with vibrant local cafes, bars & eateries, East Village Shopping Centre, a vast selection of lush parklands including adjacent Tote Park, Green Square Library with just a short stroll to Green Square Train Station & plenty of regular bus services.

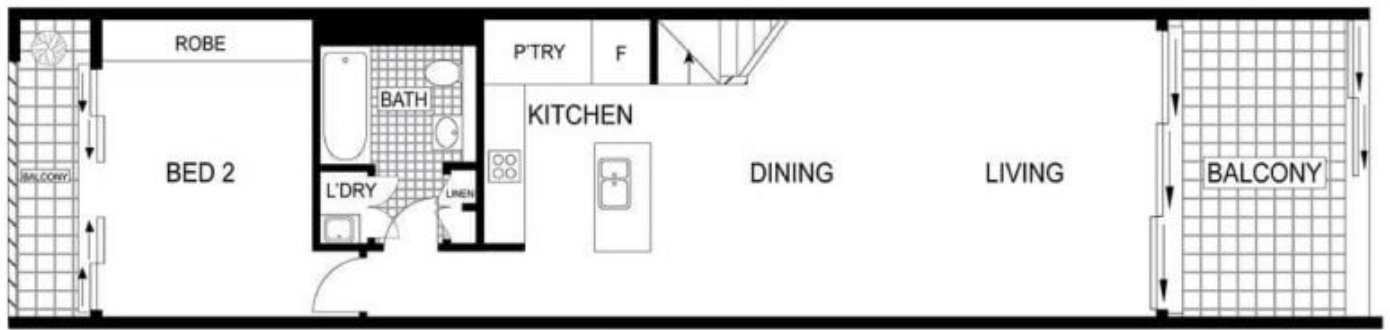
Bright open plan living space flows out onto the large covered entertainer's terrace with leafy area outlooks & westerly aspect

Sleek gourmet gas kitchen features Smeg appliances, mirrored splashback, stone benchtops with large island

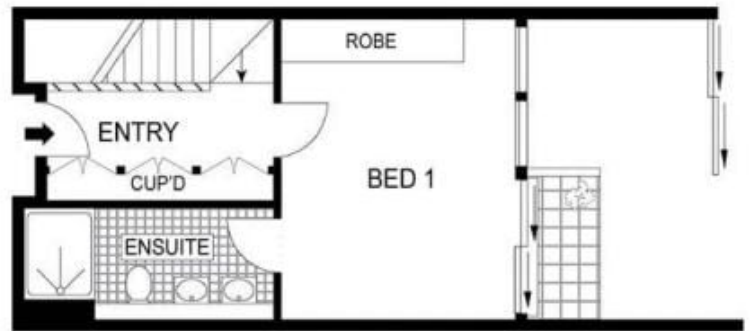
View : <https://www.onlinerealestateagents.com.au/lease/nsw/eastern-suburbs/zetland/residential/apartment/7989982>



Mahsa Abedi
0474 336 736



LEVEL THREE



LEVEL FOUR



Plans shown are for presentation purposes only and are not part of any legal document or title. They are subject to errors, omissions, inaccuracies and should not be used as a sole and accurate reference. Interested parties should make their own inquiries using independent sources.



2408/98 Joynton Avenue, Zetland