



**212/810 Elizabeth Street Waterloo NSW**

2 2 1

"Discover the Perfect Blend of Modern Elegance and Serene Garden Living at Garden House Apartments

Step into a world of contemporary charm and timeless elegance with Garden House Apartments. Nestled in a lush green oasis, this unique development captures the essence of a garden-themed retreat while offering an array of sophisticated features that redefine urban living.

Designed by the renowned JPR Architects, these exquisite apartments boast open-plan layouts flooded with natural light, creating a seamless connection between indoor and outdoor spaces. The spacious balcony provides a sun-drenched haven, perfect for relaxing or entertaining against a backdrop of verdant beauty. The attention to detail is impeccable, and every corner of this garden sanctuary reflects a dedication to excellence.

**Price** : \$ 1,050,000

**View** : <https://www.onlinerealestateagents.com.au/sale/nsw/eastern-suburbs/waterloo/residential/apartment/7762122>



**Majid Mokhtari**  
0400657657

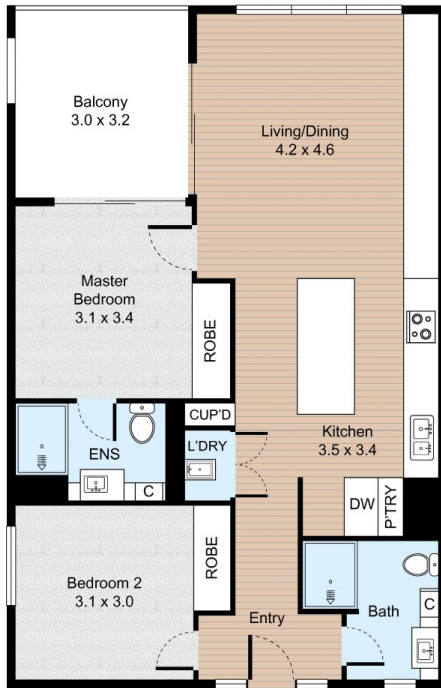


**Mahsa Abedi**  
0474 336 736

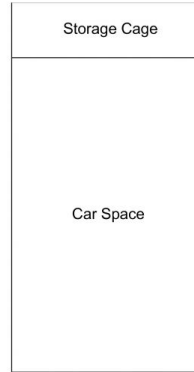
# Unit 212, 810 Elizabeth Street, Waterloo



2 Bed 2 Bath 1 Car



FLOOR PLAN



(Not In Position)

CAR SPACE



All information contained herein is gathered by Little Hinges. Whilst the scanning technology is highly reliable, we cannot guarantee its accuracy and interested parties should rely on their own enquiries.