

68A Dunning Ave Rosebery NSW

3 2 2

This exquisite four-level terrace residence is situated within the exclusive 'Trinity Terraces', an exceptional Torrens Title development nestled in the highly desirable suburb of Rosebery. Abundant natural light bathes the property from East to West, enhancing its allure, while the main bedroom boasts elevated ceilings and tall windows, adding a touch of grandeur.

The open-plan design creates a seamless flow, making it ideal for both family gatherings and hosting guests. The stylish kitchen becomes a culinary haven, and the living area extends gracefully to the courtyard, providing ample space for children to play. For those seeking a peaceful sanctuary after a busy day, the separate bedrooms offer tranquility, complemented by a dedicated study for efficient work-at-home arrangements.

Building Size : 227.3 sqm
View : <https://www.onlinerealestateagents.com.au/sale/nsw/eastern-suburbs/rosebery/residential/townhouse/7656552>



Majid Mokhtari
0400657657

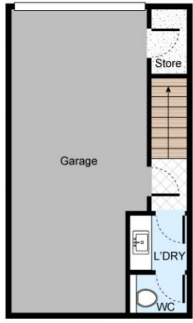


Mahsa Abedi
0474 336 736

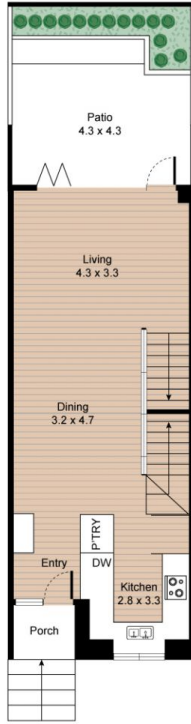
68A Dunning Avenue, Rosebery



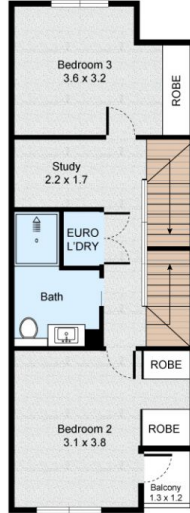
3 ½ Bed
 2 ½ Bath
 2 Car



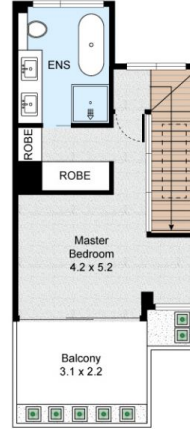
LOWER GROUND FLOOR



GROUND FLOOR



FIRST FLOOR



SECOND FLOOR



SITE PLAN

LEGEND

- 1. Porch
- 2. Patio

Building area: 183.0 sqm
 External area: 44.3 sqm
 Total area: 227.3 sqm



All information contained herein is gathered by Little Hinges.
 Whilst the scanning technology is highly reliable,
 we cannot guarantee its accuracy and interested parties
 should rely on their own enquiries.