

205/2 Saxby Close Botany NSW

2 2 2

205/2 SAXBY CLOSE, BOTANY

Claiming a desirable position within the 'Pemberton On The Park' complex, this well maintained apartment promises low maintenance modern living in a superb location. It's a stroll to shops, local cafés and transport, while near Sir Joseph Banks park and Botany Village.

- Generous layout with two bedrooms
- Two parking spots - attractive to young families and down sizers
- Two huge balconies
- Comfortable integrated living/dining zone opens to balcony
- Superb retreat to take in the fresh or and entertain friends
- Crisp stone crafted kitchen includes Smeg gas appliances
- Large bedrooms have convenient built-in robes and balcony access

Price : \$ 800,000

View : <https://www.onlinerealestateagents.com.au/sale/nsw/eastern-suburbs/botany/residential/apartment/7274521>



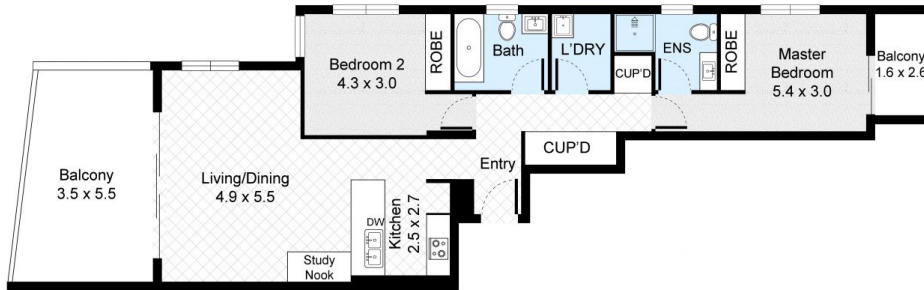
Majid Mokhtari
0400657657



Mahsa Abedi
0474 336 736

Unit 205, 2 Saxby Close, Botany

2 Bed 2 Bath 2 Car



Internal : 84m²
External : 21m²



FLOOR PLAN

CAR SPACE



All information contained herein is gathered from our 3D scanned tours via Matterport. Whilst the 3D scanning technology is very accurate we cannot guarantee its accuracy and interested parties should rely on their own enquiries.