



15 Metcalfe Street Maroubra NSW

3 1 2

15 METCALFE STREET, MAROUBRA

Occupying a substantial 314sqm level block in one of Maroubra's most sought-after community-oriented pockets, this freestanding solid brick residence presents boundless potential to re-create/renovate or re-build a brand new contemporary family home. It currently comprises an original layout with combined living/dining areas plus three well-proportioned bedrooms with built-in wardrobes and a lock-up garage. Explore the possibilities to capitalise on its desirable coastal address, within walking distance of Pacific Square, Westfield Eastgardens, quality schools, public transport and Nagle Park, while moments to Maroubra Beach.

- layout, combined living/dining
- Three well-sized bedrooms with BIR's

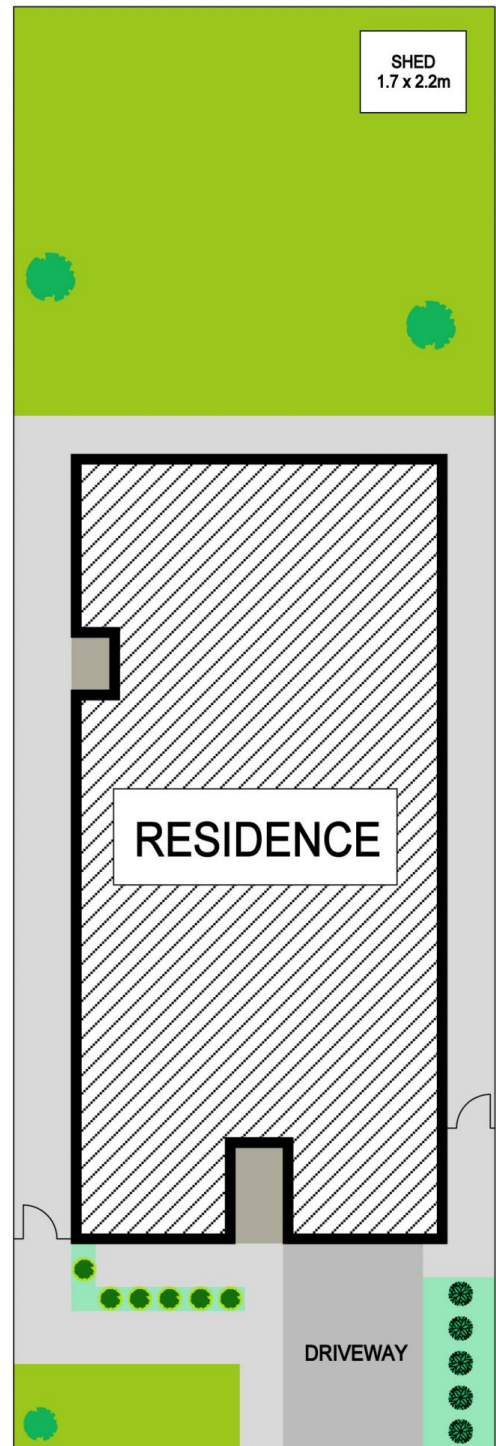
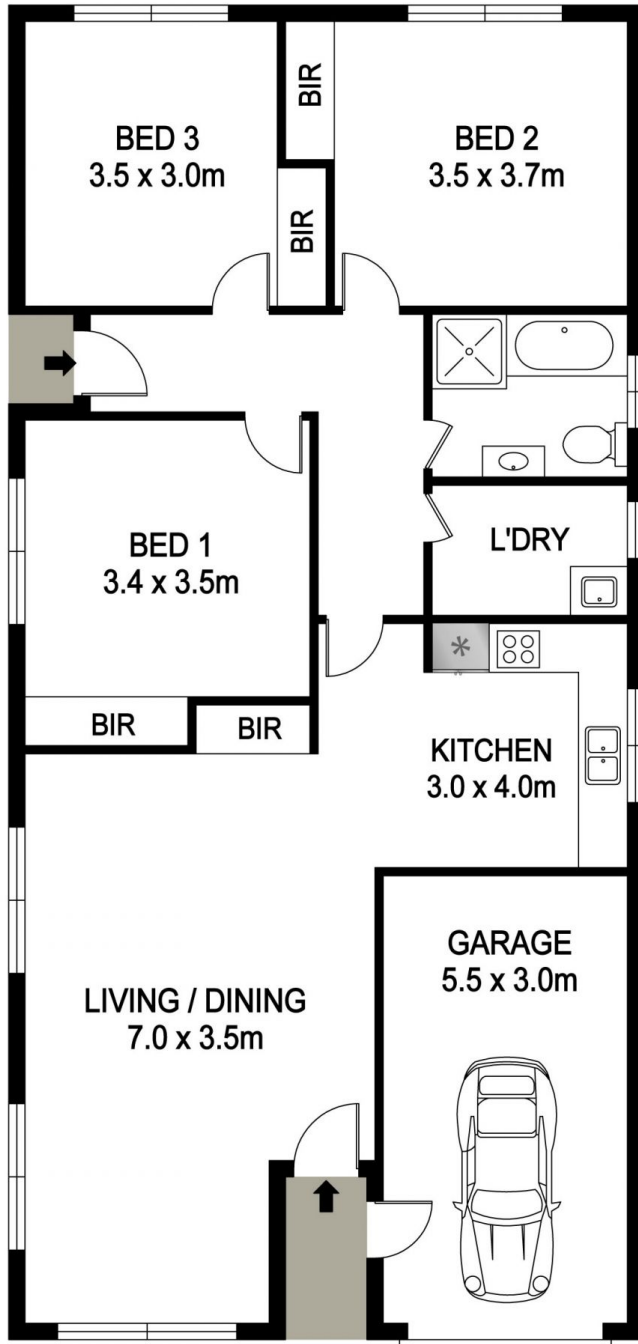
View : <https://www.onlinerealestateagents.com.au/sale/nsw/eastern-suburbs/maroubra/residential/house/6887240>



Majid Mokhtari
0400657657



Mahsa Abedi
0474 336 736



15 METCALFE STREET, MAROUBRA



DISCLAIMER PLANS SHOWN ARE FOR MARKETING PURPOSES ONLY, ALL DIMENSIONS ARE APPROXIMATE AND NOT TO SCALE. THEY ARE SUBJECT TO ERRORS AND INACCURACIES AND NO LIABILITY WILL BE ACCEPTED. INTERESTED PARTIES SHOULD MAKE THEIR OWN INQUIRES.