

**1112/1 Grandstand Parade Zetland NSW**

2 2 1

Located in Zetland's most desirable building 'Prominence'. A shining example of inspired Victoria Park living.

Exceeding all expectations in size, location and design, this exceptional apartments offers a vibrant lifestyle with a contemporary style.

With impressive proportions throughout, brilliant natural lighting, opening up to a huge courtyard with easy street access

Each of the two bedrooms are oversized with built in wardrobes, while the master enjoys a stunning en-suite, walk in wardrobe with direct access to the courtyard.

Walk to transport and parks and eat out at a new cafe every day.

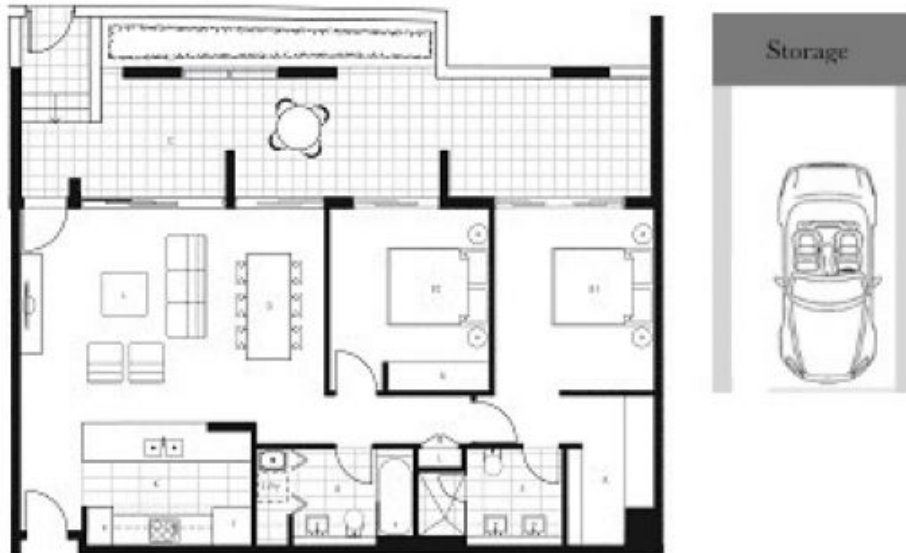
**Price** : \$ 985,000  
**View** : <https://www.onlinerealestateagents.com.au/sale/nsw/eastern-suburbs/zetland/residential/apartme nt/6534265>



**Majid Mokhtari**  
0400657657



**Tolga Selim**  
0487 846 751



1112/1 Grandstand Parade, Zetland NSW 2017

Disclaimer: All information contained herein is gathered from sources we believe reliable. We have no reason to doubt its accuracy, however we cannot guarantee it. All interested parties should make and rely upon their own enquiries.

Internal/External Area: 134sqm  
Car Park & Storage: 29 sqm

Total Area: 163 sqm

