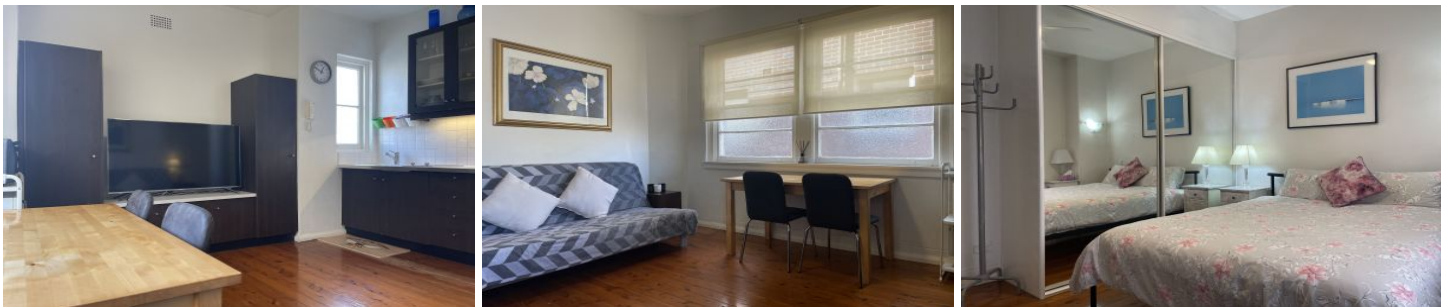




**HOLDING DEPOSIT RECIEVED  
CONTACT US ON 0474 336 736  
FOR MORE PROPERTIES**



**101 New South Head Road Edgecliff NSW**

1 🏠 1 📄

This generous and very practical one bedroom offering is located in the central pocket of Edgecliff which offers easy access to local parks and dining options in both Double Bay & Potts Point.

**View :** <https://www.onlinerealestateagents.com.au/lease/nsw/eastern-suburbs/edgecliff/residential/apartment/6490256>

Quietly position at rear of building  
Well-appointed kitchen with induction cooking  
Generous-sized bed with mirrored built-in robes  
Stylishly updated bathroom with great lighting  
Polished floorboards, neutral and airy interiors  
Only a short walk to local public transport links  
Located across the road from Rushcutters Bay  
Onsite laundry facilities, small boutique block  
Moments to lively Edgecliff Village precinct  
furnished, Pets permitted



**Zeynab Melara**  
0474 336 736



**Tolga Selim**  
0487 846 751